

Hawkvi
CYCLING YOUR LIFE



Hawkvi[®]

The name Hawkvi originated from its hometown, Eagle Village, where eagles hover in the blue skies over this beautiful town.

Looks up in the sky, riders are often rewarded with its breathtaking scenery.

Hawkvi was created for the passion of cycling with nature. Such passion motivates us to strive for higher standards in our products.

We are committed to constantly develop more and more innovative products that meet the needs of riders.

As one of the newest members in cycling industry, Hawkvi has already become one of the reliable brands backed by some of the most experienced cyclists, professional engineers and innovative developers in the field of cycling. This allows us the ability to reach new height in superiority and surpass the expectation of others.

Hawkvi specializes in development and manufacturing of the best and most competitive wheel set in the market. Passion is who we are; Technology is what fueled us.

Our main focus is on riders' needs so they can reach their goals.

Based on our passion for cycling, cutting-edge technology, innovation, and Hawkvi's founding spirit; We believe Hawkvi will be etched deep into the heart of every riders.





Next to the bike frame itself, nothing has a bigger impact on your bike's performance than your wheels. From rugged training wheels to featherweight racing wheels, upgrading to a set of Hawkvi bike wheels is a surefire way to save weight, go faster, improve your bike's handling, or highlighting the personal style.

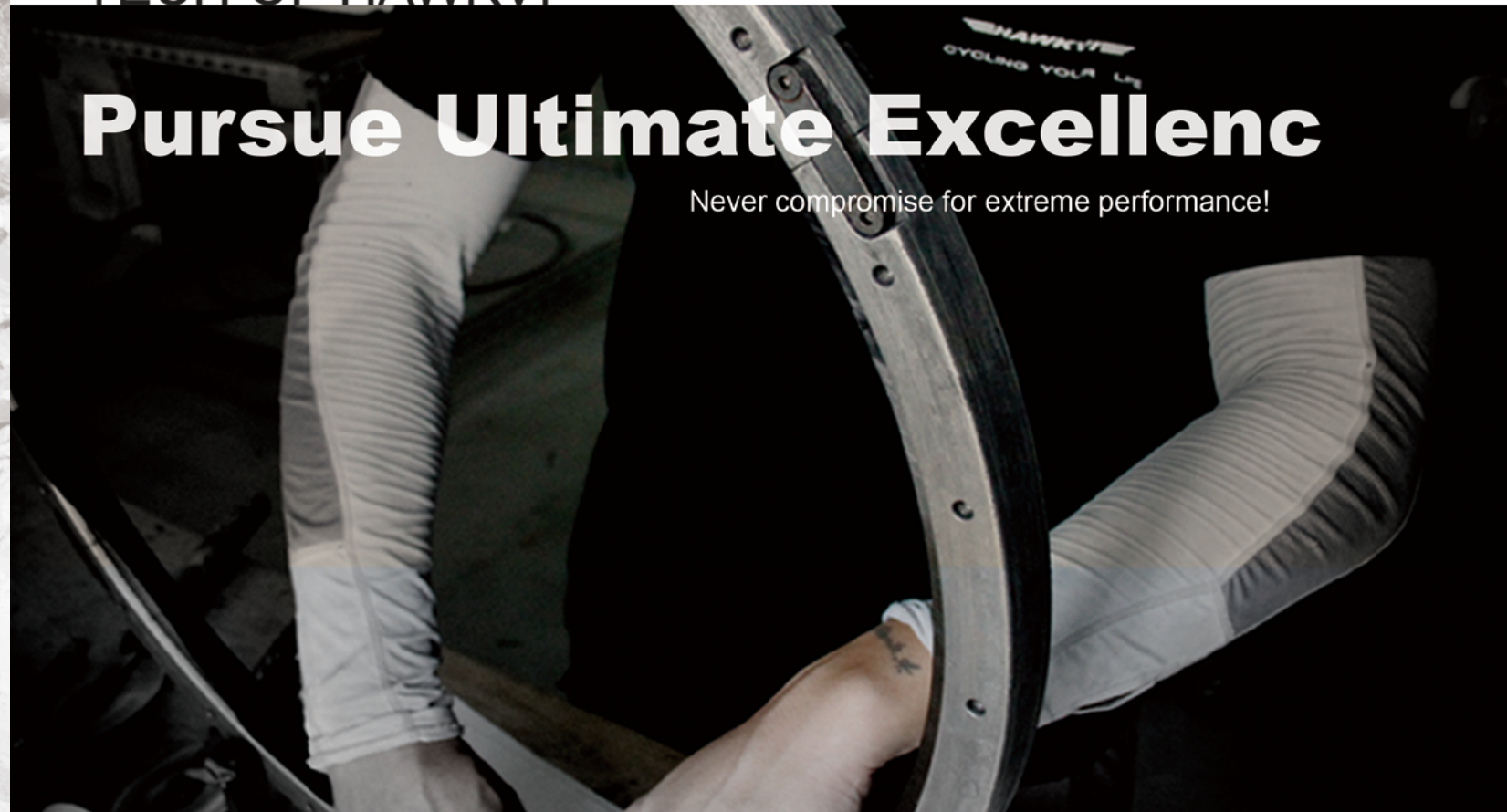
Blindly follow popular trend is not our spirit. The Hawkvi design is not only from technology but also from life experience. We are committed to make riders experience and enjoy the ride. Whenever riding, we always thinking about how to closer to the real demand.

We believe in balance and we take advantage of every opportunity that life presents. And wheels built by hand are just plain better. They offer noticeably superior ride quality along with measurable gains in durability. We know that there are faster and cheaper ways, but we're in the business of making exceptional wheels. We want you to be as proud to ride them as we are to build them.

TECH OF HAWKVI

Pursue Ultimate Excellenc

Never compromise for extreme performance!



PRECISION-ENGINEERED MATERIALS

Rather than use the consistently failing attempts at reducing the temperatures produced by braking, we rejected what has become acceptable practice and instead increased the heat capacity of our materials. Never give up any opportunity to improve,AL 7075,T800 carbon fiber,to be in most of Hawkvi wheel.In addition to the use of good material,that we pay more attention to maximize the effectiveness of the compatibility between materials.

EXTREME POWER TRANSMISSION

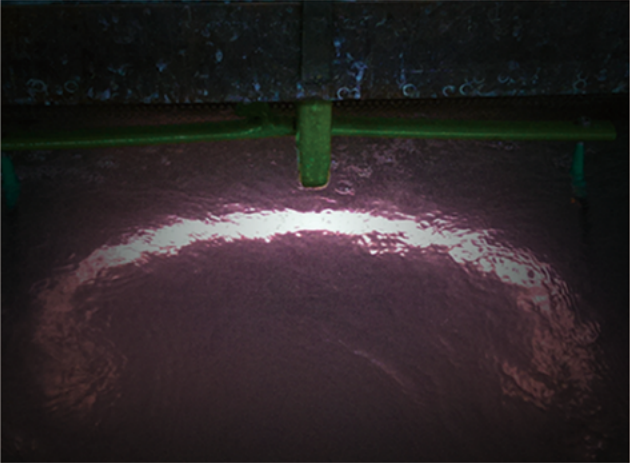
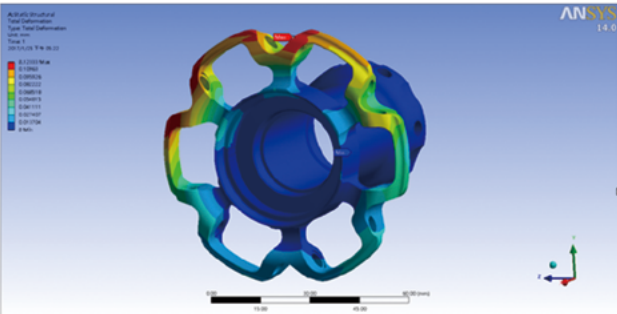
We have been working hard to improve transmission capacity for long time.Over size hub flange,Ultra strong Axle,Lighter but stronger rims,closer tension of spokes.VRM spokes.Hawkvi always focus on greater efficiency in transmission of power to all Hawkvi wheel.Thanks to over size flange,**ZETA Geometry**.They makes Hawkvi wheels more powerful and greater transmission of power.

DBS CERAMIC ARMOR SYSTEM

Hawkvi **D.B.S** braking teconology is a combination of anodizing and microarc oxidation (MAO) . This braking surface can present high hardness and a continuous barrier, these coatings can offer protection against wear, corrosion or heat as well as electrical insulation. Comes up with increased durability and higher braking force.

TENSION BALANCING MECHANISM

To make spokes tension closer between Drived side and Non-driven side.It is a good way to increase lateral rigidity and to avoid nipples too easy to loose.We use three different way to enhance this part in Hawkvi wheels.The asymmetric rim ,Two-to-One Spoke Ratio patent, and Over size driven side hub flange. Different or mix ways to balance spokes tension in our wheels base on different functions or demands. We often use Two-to-One Spoke Ratio patent and Over size driven side flange in higher profile rim or high speed demand wheels. And asymmetric rims often use in emphasis on driving ability and reaction speed climbing oriented ultra light wheels.



Tubless and welded rim techology

The welding method is used on all levels of rims from OEM high volume rims to high quality after market rims. The method typically used is called a “flash-butt process”. The process is done in a large welder that grips the ends of the rim in clamps to hold and guide the rim during welding. The rim blank is rolled and cut with extra length circumferentially. The rim is clamped in the welder dies with the ends of the rim protruding about ¼” from the die on each side. The welder then starts the “flash” part of the weld cycle. It passes very high amperage current through the clamp dies while slowly moving one die to bring the ends of the rim together. The current creates an arc between the ends of the rim, burning off the extra metal allowed in the cutting of the rim blank while heating the ends of the rim. After a precisely controlled flash time, the current is turned off and the “butt” part of the weld cycle is initiated. This consists of rapidly forcing the heated ends of the rim together with great force to complete the joint. There is weld flash left around the weld that is removed to smooth the joint and blend it in to the extrusion shape.

Tubeless technology was first used by the auto industry , then by motorcycles and now has reached the cycling industry. After its debut with mountain bikes the moment has come to “put it on the road”, and that’s what we propose to do. We have developed our tubless ready technology to ensure the perfect compatibility of our tubeless rims with normal clincher types and tubes first.And keep to try and fit the any kind of tubless tire,then develop complete tubless wheel by the next step. We believe tubless using will be more extensive in the future!

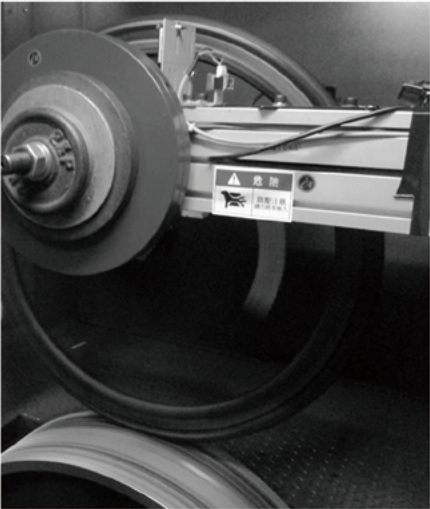
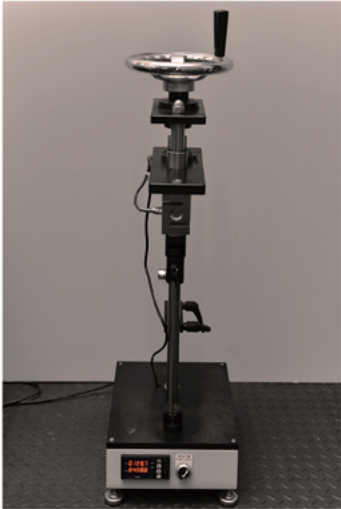


Accurate measurement and testing

In order to make high and standard quality wheels.We do test every parts for every types of wheels.It can avoid measuring instrument errors.In addition to wheels testing,that is important for safety and wheel drability.

EXQUISITE HAND BUILT

All Wheelbuilder precision handcrafted wheels pass through our exacting quality assurance process, which includes full tension analysis on custom built meters that are precicely and regularly calibrated in-house. Modern engineering production methods adopted from automotive and aerospace manufacturing are used to guarantee accuracy during each step of our build process.



VACUUM PRESS MOLDING

Hawkvi carbon spokes use of VPM tec to enhance strength and durability requirements.We even use aerospace grade epoxy resin,that can be let alloy and carbon to achieve the perfect combination.

GLUING TECHNOLOGY

Many cumbersome processes of different materials joint.From grinding ,gluing to bake and heat.We focus on every detail and control all the Pa-rameter setting.All we do for high quality and performance!

AERODYNAMICS AND LIGHTWEIGHT

We are the first road bike wheels on the market that combines the ultra aero carbon spokes with aluminum rims. This new hybrid technology combines the legendary rigidity of the alumi-num FEVO 20 and FEVO 30 PRO with improved reactivity, thanks to the carbon spokes technology, which reduce the peripheral weight and so the moment of inertia. A light wheel, with a superior handling and an optimal power transmission to the ground. Super narrow and flat carbon spoke setup provides the high performance we never see: this choice was made to ensure optimal rigidity whilst paying special attention to aerodynamics. The legendary HAWKVI ultra aero carbon spoke system steering precision starts here.



Satisfying pleasure riding constructed to bring maximal performance in minimal energy consumption.Ultra performance lightweight and aero shpae carbon spoke in Hawkvi pro-duct line.Hawkvi carbon spoke technology is totally different from other competitors.We have the best carbon molding technology,ma-terial apply and structure design ability. Hawkvi even make super aero and lite carbo-spoke in the world this year. This is due to Hawkvi team and as well as strong technical background. In order to keep spokes to compete with high-strength tension,that we use special structure and epoxy to let it safe and durable.Amazing strong that spoke tension up to 400kg or ex-ceeds 50% strongger comparing to tradtiona-design.Aerospace grade aerodynamic carbon-spoke shape and techology,superior perfo-mance in tension ,speed performance,torque and bending resistance to accomplish great wheels with best lateral stiffness.



EGON

The Hawkvi EGON line is your premium choice for high-end full carbon race wheels. Loved by professional road, track, triathlon, and cyclocross athletes. The EGON offers an unbeatable combination of light weight, aerodynamic superiority, durability, and supreme stiffness.

New for 2017, the EGON family is now available with disc brake wheels. If you want to build a race rig for cyclocross, gravel grinders, or poor-weather road racing, we have you covered. In addition, the new EGON is now available in two kind of clincher wheel.

Rather than use the consistently failing attempts at reducing the temperatures produced by braking, we rejected what has become acceptable practice and instead increased the heat capacity of our materials. Our proprietary high Tg point resin is 30% higher than other “high” Tg resins. A rim that can withstand more heat leads to braking performance unseen on other carbon rims.

Both the purist and the progressive cyclist can appreciate the development of the Hawkvi EGON. Designed with maximum performance in mind, each of them are born to race.



EGON

Both the purist and the progressive cyclist can appreciate the development of the Hawkvi EGON. Designed with maximum performance in mind, each of them are born to race.

EGON



E3

DETAILED FEATURES

| | |
|---------------------|------------------------------|
| Cassette Type | SHIMANO 11 / SRAM 11 |
| Finish | MATTE CARBON, STC DECALS |
| Wheelset Weight | 1380g |
| Type | Carbon Tubular |
| Rim Material | V38 HIGH-TG Carbon |
| Rim Depth | 38mm |
| External Rim Width | 22.1mm |
| Spokes | STRAIGHT-PULL, BLADED |
| Front Spoke Pattern | 20 Total / Radial |
| Rear Spoke Pattern | 24Total /1x (ND) and 2x (DS) |
| Front Hub Type | VRS-1F |
| Rear Hub Type | VRS-2R |

OVERVIEW

E3 is suitable for any terrain ,especially climbing.
No wheel is lighter or more agile, designed to confront the toughest ascents and power through every bend.
The high 210 TG exposy full carbon rim and the hubs with over size flange,axle,bearing assure the maximum power transmission.
Racing E3 tubular wheel is entirely hand-assembled by a specialised Hawkvi technician and is checked in every tiny detail .
This ensures maximum performance and reliability for all Hawkvi wheels.The E3 is the best teammate,who take you to every where.

EGON



E5

DETAILED FEATURES

| | |
|---------------------|------------------------------|
| Cassette Type | SHIMANO 11 / SRAM 11 |
| Finish | MATTE CARBON, STC DECALS |
| Wheelset Weight | 1420g |
| Type | Carbon Tubular |
| Rim Material | V50 HIGH-TG Carbon |
| Rim Depth | 50mm |
| External Rim Width | 24.2mm |
| Spokes | STRAIGHT-PULL, BLADED |
| Front Spoke Pattern | 16 Total / Radial |
| Rear Spoke Pattern | 24Total /1x (ND) and 2x (DS) |
| Front Hub Type | VRS-2F |
| Rear Hub Type | VRS-2R |

OVERVIEW

The high TG exposy full carbon rim and the hubs with over size flange,axle,bearing assure the maximum power transmission.
E5 not only enables the maximum aerodynamic penetration, reducing friction but also have extreme accelerated reaction.
The design of the profile details makes the wheel extremely manageable even in a crosswind.
E5 is a multifunctional and the most aggressive wheel for all of you.

EGON



EC3

DETAILED FEATURES

| | |
|---------------------|----------------------------------|
| Cassette Type | SHIMANO 11 / SRAM 11 |
| Finish | MATTE CARBON, STC DECALS |
| Wheelset Weight | 1490g |
| Type | Full carbon Clincher |
| Rim Material | T700 / HIGH-TG |
| Rim Depth | Front/Rear 38mm |
| External Rim Width | F/R 20mm |
| Spokes | STRAIGHT-PULL, Bladed Spoke |
| Front Spoke Pattern | 16 Total / Radial |
| Rear Spoke Pattern | 24Total /Radial (ND) and 2x (DS) |
| Front Hub Type | VRS-2F |
| Rear Hub Type | VRS-2R |

OVERVIEW

The best all-around race wheel ever!Hawkvi EC3 is major designed for all-around race road racing demand.

The high 250 TG exposy full carbon rim with 20 rim width better both for aerodynamic and climbing. Ultra smooth hub and maximum power transmission ability.

These are the medium-depth aerodynamic road wheels you’ve been waiting for. The EC3 takes the proven Fantom rim shape and scales it down to a shallower 38-millimeter depth. These wheels offer fierce acceleration, smooth, dependable braking and impressive aerodynamics. From the Spring Classics to rough and tumble cyclocross racing, you’ll be hard pressed to find a condition where the EC3 is out of its element. The EC3 is available in carbon clincher. EC3 wheels are entirely built by hand from start to finish and acoustically tuned. These wheels combine top-end materials, a methodical build and the high quality hubset.

EGON



EC5

DETAILED FEATURES

| | |
|---------------------|----------------------------------|
| Cassette Type | SHIMANO 11 / SRAM 11 |
| Finish | MATTE CARBON, STC DECALS |
| Wheelset Weight | 1570g |
| Type | Full carbon Clincher |
| Rim Material | T700 / HIGH-TG |
| Rim Depth | Front/Rear 50mm |
| External Rim Width | F/R 24mm |
| Spokes | STRAIGHT-PULL, Bladed Spoke |
| Front Spoke Pattern | 16 Total / Radial |
| Rear Spoke Pattern | 24Total /Radial (ND) and 2x (DS) |
| Front Hub Type | VRS-2F |
| Rear Hub Type | VRS-2R |

OVERVIEW

Hawkvi EC5 is major designed for Road racing. The high 250 TG exposy full carbon rim with 24 rim width aerodynamic rim shape. Ultra smooth hub and maximum power transmission ability.

To cheats the wind and Saving time and watts in all conditions.Talk about features! These wheels have everything anyone could ever ask for: leading aerodynamics, unrivaled braking performance, outstanding durability and competitive weight. Riding these wheels in a 40-kilometer time trial saves a whopping 14 seconds over the next fastest wheel. Riders concerned with finishing times and power output can’t afford not to buy these groundbreaking wheels. These aren’t simply race-day only wheels, they’re built strong Hawkvi’s industry-leading carbon lay-up process provides smooth, consistent braking. Like every high-end wheel in the Hawkvi line, EC5 wheels are entirely built by hand from start to finish and acoustically tuned. These wheels combine top-end materials, a methodical build and an advanced rim design. They are extraordinarily fast wheels that will roll true for years to come.

EGON



EC6

DETAILED FEATURES

| | |
|---------------------|--------------------------|
| Cassette Type | SHIMANO 11 / SRAM 11 |
| Finish | MATTE CARBON, SKC DECALS |
| Wheelset Weight | 1630g |
| Type | Full carbon Clincher |
| Rim Material | T700 / HIGH-TG |
| Rim Depth | 60mm |
| External Rim Width | F/R 24mm |
| Spokes | Aero Bladed Spoke |
| Front Spoke Pattern | 16 Total / ZETA Geometry |
| Rear Spoke Pattern | 18Total /ZETA Geometry |
| Front Hub Type | VR2-F |
| Rear Hub Type | VR2-R |

OVERVIEW

Different with EC5 ,that the EC6 is a extreme wheel of wind cut shape and ZATA geomerty.60 mm extra wide full carbon rim profile16/18 stainless steel double-buttet spokes
Stiff OVER-SIZE aluminum axles and large bearings. All for speed and long distance,EC6 have its own place in road.
Extrme aerodynamic rim shape and unique ZETA patent of Hawkvi EC6.It is your best weapon of Time trail or high speed situation.
Indeed the EC6 represent the top-of-the-range road bike wheels in this segment thanks to their outstand- ing performance: the special carbon rim structure combined with the oversize hub and spokes with the ZETA system given the wheel incredible responsive- ness ,more stable and comfortable ride experience. That show you extraordinary taste and sense of speed.

EGON



E36C Carbon pro

DETAILED FEATURES

| | |
|---------------------|----------------------------------|
| Cassette Type | SHIMANO 11 / SRAM 11 |
| Finish | MATTE CARBON, SKC DECALS |
| Wheelset Weight | 1460g |
| Type | Full carbon Clincher |
| Rim Material | T700 / HIGH-TG |
| Rim Depth | 36mm |
| External Rim Width | F/R 24mm |
| Spokes | Aero Bladed Carbon spoke |
| Front Spoke Pattern | 16 Total / Radial |
| Rear Spoke Pattern | 21Total /Radial (ND) and 2x (DS) |
| Front Hub Type | VR3-F |
| Rear Hub Type | VR3-R |

OVERVIEW

Time and time again we are confronted by conflict- ing objectives which don't seem to be reconcilable. And it is these that spur us on and keep us on our toes. We've always followed the maxim of "find the best solution rather than make lazy compromises". This is exactly how we went about creating Hawkvi E36C Carbon Pro. We wanted a high-profile wheel that would set new benchmarks in toughness, crosswind conditions and comfort. The result is the perfect wheel for both strong winds and hills, a wheel that notably relieves strain on the neck and shoulders.
It combined with Aero shape ,stiffness and strength carbon spoke.Not only spokes made by carbon,but makes more durable and strong stuff.This is why discerning cyclists opt for E36C Carbon Pro. Wise choice, we think.

EGON



E36C Ultra speed

DETAILED FEATURES

| | |
|---------------------|-----------------------------------|
| Cassette Type | SHIMANO 11 / SRAM 11 |
| Finish | MATTE CARBON, SKC DECALS |
| Wheelset Weight | 1360g |
| Type | Full carbon Clincher |
| Rim Material | T700 / HIGH-TG |
| Rim Depth | 36mm |
| External Rim Width | F/R 24mm |
| Spokes | Ultra Speed Carbon spoke |
| Front Spoke Pattern | 16 Total / Radial |
| Rear Spoke Pattern | 21 Total /Radial (ND) and 2x (DS) |
| Front Hub Type | VR4-F |
| Rear Hub Type | VR4-R |

OVERVIEW

Even the youngest in the EGON family release in the new 2017 version: 24 mm wide, 36 mm tall rim, new graphics, radial spokes on the front wheel and two to one on the rear, outstanding nipples design and structure helps spokes in the best condition, hubs in aluminum with differentiated front and rear diameters with new adjustment ring, over size axle, aluminum 7075 freewheel bodies and aerodynamic quick release are just some of the strong points that are difficult to fully appreciate until you use the E36C ultra speed in challenges against regular adversaries or the in those with training companions.

E36C Ultra Speed is different with E36C PRO, not only the different spoke shape but also there advantage of performance! This is exactly how we went about creating Two types of wheel in the same rim shape. We wanted a super strong and power transfer by E36C Ultra Speed. And E36C Ultra speed has more benefit in high speed and lighter to be able to climb faster! It combined with Aero shape ,stiffness and strength carbon spoke. Not only spokes made by carbon, but different type carbon spoke on driven side and non-driven side. The stronger 2.5mm aero carbon spokes on driven side and lighter 2.0mm spoke on different side.

EGON



E50C Ultra speed

DETAILED FEATURES

| | |
|---------------------|-----------------------------------|
| Cassette Type | SHIMANO 11 / SRAM 11 |
| Finish | MATTE CARBON, SKC DECALS |
| Wheelset Weight | 1490g |
| Type | Full carbon Clincher |
| Rim Material | T700 / HIGH-TG |
| Rim Depth | 50mm |
| External Rim Width | F/R 24mm (tubeless ready) |
| Spokes | Ultra Speed Carbon spoke |
| Front Spoke Pattern | 16 Total / Radial |
| Rear Spoke Pattern | 21 Total /Radial (ND) and 2x (DS) |
| Front Hub Type | VR4-F |
| Rear Hub Type | VR4-R |

OVERVIEW

We are consistently looking for the optimum. And when we get this certain feeling, that something could be better, we improve it. That's why we redefined our benchmark. So we focussed, we worked meticulously, we puzzled and we filed - on the design, the weight and the aerodynamics. The result: Even more control while riding and even better characteristics on the brake than ever. So we pushed the limits once again and created a wheel, that is really impressive: It is the best E50C Ultra Speed, we have ever built.

The brand new design and concepts bursts onto the market not only with introduction of the new wheel dedicated to the clincher, but also with improvements to the previous technologies in terms of lightness, aerodynamics, stiffness and comfort thanks to use of the new wider rim and front and rear hubs with different diameters and over size axle. Plus extremely clean-cut aesthetics guaranteed by innovative speed lite carbon spoke. All without giving up on the extreme stiffness, which has become the market benchmark and is the result of use of V.P.M TECH. The EGON SERIES wheel is entirely hand-assembled by a specialised Hawkvi® technician and is checked in every tiny detail with electronic instrumentation. This ensures maximum performance and reliability for all Hawkvi® wheels.

EGON



ED

DETAILED FEATURES

| | |
|--------------------|--------------------------|
| Cassette Type | SHIMANO 11 / SRAM 11 |
| Finish | MATTE CARBON, STC DECALS |
| Wheelset Weight | 1300g |
| Type | Carbon Tubular |
| Rim Material | VD Carbon |
| Rim Depth | DISC |
| External Rim Width | 21.8mm |
| Rear Hub Type | VD |

OVERVIEW

Hawkvi ED is the disc race wheel in the flagship EGON tubular range. All but the hub is fabricated in carbon-fiber, for an outstandingly low all-up weight of 1300 g. This is the specialist's wheel for ultimate speed in the time trial. It is very good performance with our E6.

EGON



EX5

DETAILED FEATURES

| | |
|---------------------|-------------------------------|
| Cassette Type | SHIMANO 11 / SRAM 11 |
| Finish | MATTE CARBON, STC DECALS |
| Wheelset Weight | 1700g |
| Type | Full Carbon Clincher |
| Rim Material | VC55 Carbon |
| Rim Depth | 55mm |
| External Rim Width | 24.2mm |
| Spokes | STRAIGHT-PULL, BLADED |
| Front Spoke Pattern | 24Total / 2x |
| Rear Spoke Pattern | 24Total / 2x (ND) and 2x (DS) |
| Front Hub Type | VRDS-1F |
| Rear Hub Type | VRDS-1R |

OVERVIEW

The all new EX5 is disc wheels combined to the latest brake systems, there are no longer any compromises associated with going disc. These wheels offer fierce acceleration, smooth, dependable durability and impressive aerodynamics. From the spring classics to rough and tumble cyclocross racing, you'd be hard pressed to find a condition where the EX5 was out of its element.



ZEAL

Why do riders love the ZEAL so much? It gets the job done in any situation, it doesn't complain, and it makes the competition cry for mercy. The beauty of the ZEAL is in its options. You can have alloy-reinforcement rim, Alloy rim braking surface or even full carbon series, and new for 2017 – even disc brakes. The ZEAL series received a major update in 2016, with the addition of the 24mm-wide Plus full carbon rim, and for 2017 – ZA80 with spoke tension balancing technology and special patent.

Now you can have even more speed, comfort convenient and control – with all of the value and killer looks that you're used to. It's worth to mention, High-tg and ultra strong structural and Alloy reinforcement were used in ZEAL respectively.

ZEAL



ZA80

DETAILED FEATURES

| | |
|---------------------|--------------------------|
| Cassette Type | SHIMANO 11 / SRAM 11 |
| Finish | MATTE CARBON, SKC DECALS |
| Wheelset Weight | 2186g |
| Type | AL Carbon Clincher |
| Rim Material | AC80 Carbon |
| Rim Depth | 80mm |
| External Rim Width | 21mm |
| Spokes | Aero Bladed Spoke |
| Front Spoke Pattern | 16 Total / Radial |
| Rear Spoke Pattern | 18Total /ZETA Geometry |
| Front Hub Type | VR2-F |
| Rear Hub Type | VR2-R |

OVERVIEW

ZA80 is the wheel of the highest rim profile of ZEAL family. We love to show you in everywhere. Where you need higher speed, where ZA80 there! Extreme aerodynamic rim shape and unique ZETA patent of Hawkvi ZA80. It is your best weapon of Time trial or high speed situation. Indeed the ZA80 represent the top-of-the-range road bike wheels in this segment thanks to their outstanding performance: the special aluminium/-carbon structure combined with the oversize hub and spokes with the ZETA system give the wheel incredible responsiveness, more stable and comfortable ride experience. The Dark Label and ceramic dark brake side wall. That show

FEVO

FEVO30

DETAILED FEATURES

| | |
|---------------------|----------------------------------|
| Cassette Type | SHIMANO 11 / SRAM 11 |
| Finish | MATTE BLACK, STC.DECALS |
| Wheelset Weight | 1520g |
| Type | Alloy Clincher, D.B.S tec |
| Rim Material | AL6066 |
| Rim Depth | 30mm |
| External Rim Width | 22mm |
| Spokes | STRAIGHT-PULL, Bladed Spoke |
| Front Spoke Pattern | 16 Total / Radial |
| Rear Spoke Pattern | 24Total /Radial (ND) and 2x (DS) |
| Front Hub Type | VRS-2F |
| Rear Hub Type | VRS-2R |

OVERVIEW

Total black! A new look, a new technology, a new way of living the road.

With the "D.B.S CERAMIC ARMOR SYSTEM" treated surface the aluminum core changes its soul.

The gold standard among high-level aluminum road bike wheels.

With the unmistakable character that everybody knows well, the absolute ability to transmit your energy on the asphalt, its extreme riding precision. Unrivalled in the peloton: extraordinary performance and high impact aesthetics make these road bike wheel the point of reference for cyclists.

FEVO30 wheels have become synonymous with excellence, quality, performance, reliability and victory!

FEVO

DBS CERAMIC ARMOR SYSTEM

Hawkvi **D.B.S** braking technology is a combination of anodizing and microarc oxidation (MAO) . This braking surface can present high hardness and a continuous barrier, these coatings can offer protection against wear, corrosion or heat as well as electrical insulation.

Comes up with increased durability and higher braking force.



FEVO30

FEVO



FEVO20 Dark Pro

DETAILED FEATURES

| | |
|---------------------|------------------------------|
| Cassette Type | SHIMANO 11 / SRAM 11 |
| Finish | D.B.S BLACK, STC DECALS |
| Wheelset Weight | 1480g |
| Type | Alloy Clincher |
| Rim Material | AL6066 |
| Rim Depth | F24mm/R28mm |
| External Rim Width | F19mm/R22mm |
| Spokes | Aero Bladed Carbon spoke |
| Front Spoke Pattern | 16 Total / Radial |
| Rear Spoke Pattern | 21Total /1x (ND) and 2x (DS) |
| Front Hub Type | VRS-3F |
| Rear Hub Type | VRS-3R |

OVERVIEW

It is not the lightest wheel but the nearly perfect climbing wheel. Because the V.P.M process makes FEVO20 pro standar safer and stronger. Special material of rim and perfect flash welded process, that is not other alloy wheels can compete.

The Fevo 20 Dark Pro is, by definition, a mountain-biker's wheel. The full-carbon's aero spokes lightness, stiffness and responsiveness. Long distances don't frighten this wheel, and long climbs are the ideal terrain for testing the great two wheel "climbers" of the world. High strength, low vibrations. The beauty of the V.P.M technology is that it also delivers two others benefits that every cyclist needs when going for an climbing adventure: igh strength and low variable, thanks to the s V.P.M carbon spokes, and road vibration dampening and vertical compliance for extra comfort, so you can ride longer, further and higher. The eagle eye D.B.S braking teconology, that makes rim durable and higher braking performance. We try making better acceleration and power transmission more stable! FEVO20 repalce two to one ratio patent with asymmetric rim and one two one ratio patent. We believe use fit design in their own place.

FEVO



FEVO20 Pro Standard

DETAILED FEATURES

| | |
|---------------------|--------------------------------|
| Cassette Type | SHIMANO 11 / SRAM 11 |
| Finish | SAND BLASTED BLACK, STC DECALS |
| Wheelset Weight | 1480g |
| Type | Alloy Clincher |
| Rim Material | AL6066 |
| Rim Depth | F24mm/R28mm |
| External Rim Width | F19mm/R22mm |
| Spokes | V.P.M carbon spoke |
| Front Spoke Pattern | 16 Total / Radial |
| Rear Spoke Pattern | 21Total /1x (ND) and 2x (DS) |
| Front Hub Type | VRS-4F |
| Rear Hub Type | VRS-4R |

OVERVIEW

When creating the FEVO20 pro standar our goal was to provide gran fondo racers and all cyclists who love the mountains with the best possible wheel choice to achieve their climbing goals.

It is not the lightest wheel but the nearly perfect climbing wheel. Because the V.P.M process makes FEVO20 pro standar safer and stronger. Special material of rim and perfect flash welded process, that is not other alloy wheels can compete.

High strength, low vibrations. The beauty of the V.P.M technology is that it also delivers two others benefits that every cyclist needs when going for an climbing adventure: igh strength and low variable, thanks to the s V.P.M carbon spokes, and road vibration dampening and vertical compliance for extra comfort, so you can ride longer, further and higher.

FEVO



FEVO 30 Dark Pro

DETAILED FEATURES

| | |
|---------------------|------------------------------|
| Cassette Type | SHIMANO 11 / SRAM 11 |
| Finish | D.B.S BLACK, STC DECALS |
| Wheelset Weight | 1380g |
| Type | Alloy Clincher |
| Rim Material | AL6066 |
| Rim Depth | F24mm/R30mm |
| External Rim Width | F23mm/R22mm |
| Spokes | Ultra Speed Carbon spoke |
| Front Spoke Pattern | 16 Total / Radial |
| Rear Spoke Pattern | 21Total /1x (ND) and 2x (DS) |
| Front Hub Type | VRS-4F |
| Rear Hub Type | VRS-4R |

OVERVIEW

The gold standard of performance aluminum racing wheels goes by the name of Fevo family. Total black! A new look, a new technology, a new way of living the road. With the "D.B.S CERAMIC ARMOR SYSTEM" treated surface the aluminum core changes its soul. The sophisticated surface treatment that gives this wheelset its sleek and elegant dark look also represents a significant performance advantage. This treatment permits surefooted and strong braking power, above and beyond that of normal aluminium rims.

We wanted a super strong and power transfer by FEVO 30 Dark pro. It has more benefit in high speed and lighter to be able to climb faster! It combined with Aero shape, stiffness and strength carbon spoke. Not only spokes made by carbon, but different type carbon spoke on driven side and non-driven side.

FEVO 30 Dark pro is sure to turn heads of both the competition on race day as well as those next to you at the spotlight.

FEVO



FEVO 30 Pro Standard

DETAILED FEATURES

| | |
|---------------------|--------------------------------|
| Cassette Type | SHIMANO 11 / SRAM 11 |
| Finish | SAND BLASTED BLACK, STC DECALS |
| Wheelset Weight | 1380g |
| Type | Alloy Clincher |
| Rim Material | AL6066 |
| Rim Depth | F24mm/R30mm |
| External Rim Width | F23mm/R22mm |
| Spokes | Ultra Speed Carbon spoke |
| Front Spoke Pattern | 16 Total / Radial |
| Rear Spoke Pattern | 21Total /1x (ND) and 2x (DS) |
| Front Hub Type | VRS-4F |
| Rear Hub Type | VRS-4R |

OVERVIEW

Normal rim brake surface but extreme performance. A new technology, a new way of living the road.

With the unmistakable character that everybody knows well, the absolute ability to transmit your energy on the asphalt, its extreme riding precision. Unrivalled in the peloton: extraordinary performance and high impact aesthetics make these road bike wheels the point of reference for cyclists. It is different with Fevo 30, not only the different spoke shape but also the advantage of performance!

We wanted a super strong and power transfer by FEVO 30 PRO STANDARD. It has more benefit in high speed and lighter to be able to climb faster! It combined with Aero shape, stiffness and strength carbon spoke. Not only spokes made by carbon, but different type carbon spoke on driven side and non-driven side. The stronger 2.5mm aero carbon spokes on driven side and lighter 2.0mm spoke on different side. FEVO 30 pro standard wheels have become synonymous with excellence, quality, performance, reliability and victory!



FEVER

Family

FEVER



F2

DETAILED FEATURES

| | |
|---------------------|------------------------------|
| Cassette Type | SHIMANO 11 / SRAM 11 |
| Finish | SAND BLASTED BLACK, SKC DECA |
| Wheelset Weight | 1390g |
| Type | Alloy Clincher |
| Rim Material | AL6066 |
| Rim Depth | 24mm |
| External Rim Width | 19mm/24mm(asymmetry) |
| Spokes | STRAIGHT Aero Bladed Spoke |
| Front Spoke Pattern | 16 Total / Radial |
| Rear Spoke Pattern | 24Total /2x (ND) and 2x (DS) |
| Front Hub Type | VRS-2F |
| Rear Hub Type | VRS-1R |

OVERVIEW

How many unique design in F2?It has been design for KING of Mountain.The extrme light weight and Invincible accelerated performance.

Thanks for over eccentric amount of asymmetric rim shape. The perfect lateral rigidity and higher spoke tension,that helps riders easy ride in every slope.

We try making better acceleration and power transmission more stable!F2 repalce two to one ratio patent with asymmetric rim and one two one ratio patent.We believe use fit design in their own place.

FEVER



F3

DETAILED FEATURES

| | |
|---------------------|--------------------------------|
| Cassette Type | SHIMANO 11 / SRAM 11 |
| Finish | SAND BLASTED BLACK, SKC DECALS |
| Wheelset Weight | 1540g |
| Type | Alloy Clincher |
| Rim Material | AL6066 |
| Rim Depth | F 34.2mm/R 34.2mm |
| External Rim Width | F 22mm/F 22mm |
| Spokes | Aero Bladed Spoke |
| Front Spoke Pattern | 16Total / Radial |
| Rear Spoke Pattern | 16Total /2x (ND) and 2x (DS) |
| Front Hub Type | VR-1F |
| Rear Hub Type | VR-1R |

OVERVIEW

Hawkvi F3 is a tough team training or the entry level in FEVER range.
All but the hub is OVER SIZE FLANGE AND BEARING, 16 FRONT AND REAR LESS SPOKES AMOUNT, Asymmetric- special spokes design for an outstandingly low air resistance and greater efficiency in the transmission of power .
This is the specialist's wheel for ultimate speed

FEVER



F3 Extreme

DETAILED FEATURES

| | |
|---------------------|----------------------------------|
| Cassette Type | SHIMANO 11 / SRAM 11 |
| Finish | SAND BLASTED BLACK, SKC DECALS |
| Wheelset Weight | 1670g |
| Type | Alloy Clincher |
| Rim Material | AL6066 |
| Rim Depth | F 30/ R 30mm |
| External Rim Width | 22mm/22mm |
| Spokes | STRAIGHT-PULL, Bladed Spoke |
| Front Spoke Pattern | 20 Total / Radial |
| Rear Spoke Pattern | 24Total /Radial (ND) and 2x (DS) |
| Front Hub Type | VRS-1F |
| Rear Hub Type | VRS-2R |

OVERVIEW

Straight pull spoke hubs for light weight higher spoke tension, rolling on Japanese EZO bearings for low rolling resistance. Easy to service with normal tools. The flash welded rims which meaning they are stronger than a standard rim.
30 mm rim profile offers outstanding aerodynamics with the benefits of a simple alloy rim.
A new 30 mm high profile that makes the new F3 EXTREME wheel unique.

Aerodynamic yet easy to handle, reactive and light but with all the advantages of a standard tyre wheel with aluminium braking rim.

Suitable for all routes, the new F3 EXTREME satisfies the demands of amateurs and great long-distance riders as well as cyclists with a pronounced "racing" spirit.

State of the art technology and great performance at the very first click.



POWER BY HAWKVI

Hawkvi

FEVO30

WWW.HAWKVI.COM